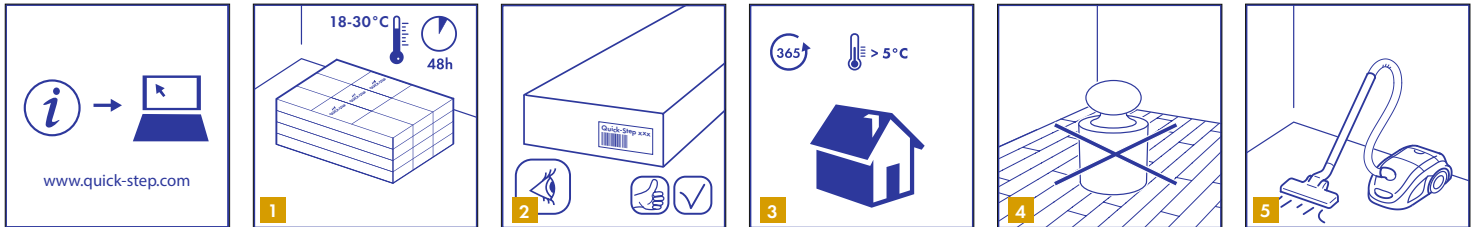


IN ORDER TO OBTAIN A GOOD RESULT, WE ADVISE TO FOLLOW THESE INSTRUCTIONS CAREFULLY.



1. PREPARATION

1

Always store and transport Quick-Step hybrid vinyl floors carefully to prevent distortions. Store and transport the boxes on a flat surface in neat stacks. Never store the boxes upright or in moist or in dusty rooms. Do not store the boxes in very cold (<5°C) or very warm (> 35°C). Quick-Step hybrid vinyl floors must be acclimatized in the room of installation between 18-30°C for a period of at least 48 hours before installation. This floor- & roomtemperature needs to be maintained prior to, during and for at least 24 hours after the installation is completed. Installation must be performed between 18-30°C.

2

Quick-Step hybrid vinyl floors can be bought in different formats, decors and qualities. Make sure you have received the correct flooring that you ordered before starting the installation. It is always a good idea to cross-check and store the end labels with your purchasing receipt.

3

Quick-Step hybrid vinyl has been designed for indoor climate controlled (> 5°C) installations, preferably at normal room temperature (= 18 - 30°C). Quick-Step hybrid vinyl cannot be installed in solariums, seasonal porches, camping trailers, boats or any other application where the temperature cannot be controlled..

4

Never fix the floor. If heavy/fixed objects (ex. kitchen, kitchen island, build-in cabinets, heavy stoves, electrical accumulators, and others) are on the floor, they can fix the flooring, preventing free expansion or contraction.

\* Heavy objects should be installed first and not placed on top of the Quick-Step hybrid vinyl floor.

\* For heavy objects with radiant heat (such as an oven), it is recommended to install them on the recommended hearth, and install the Quick-Step hybrid vinyl around the hearth and respect the perimeter gaps.

The Quick-Step hybrid vinyl floor must be able to move around heavy objects to avoid open joints and separating planks. The perimeter gap size must be respected around all heavy/fixed objects. A floating installation should ALWAYS stay floating!

5

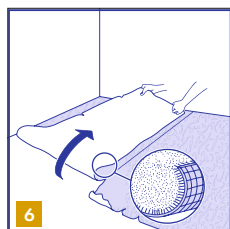
Make sure that the subfloor is dry, flat, stable, clean and free from grease and chemical substances. If needed, scrape off and clean up old adhesives. Prior to installation, carefully remove all debris (including nails), sweep and vacuum. Repair major surface imperfections and large cracks. It is recommended to remove old skirtings and to install new ones after the installation of the floor, alternatively, a scotia can be fitted around the perimeter to cover the gap. Your retailer will be able to supply a range of special profiles for finishing at doorways and thresholds

## 1. PREPARATION

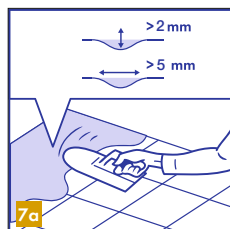
## 2. INSTALLATION

## 3. FINISHING

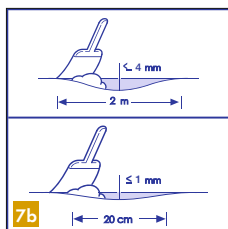
## 4. MAINTENANCE



6



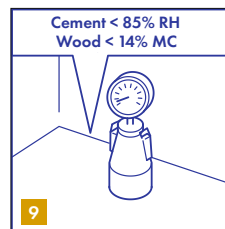
7a



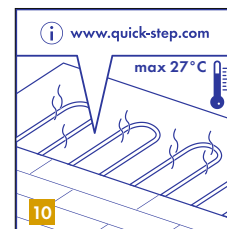
7b



8



9



10

6

The type of subfloor, its quality and its preparation has a big influence on the final installation result. If the subfloor is not appropriate for the installation of Quick-Step hybrid vinyl then necessary actions should be taken. Contact your Quick-Step vinyl dealer, who will be more than happy to help you. Be aware that unevenness in the subfloor may leave marks and can create gaps in your Quick-Step hybrid vinyl floor. The subfloor should be stable and firmly fixed. Furthermore it cannot be soft, damaged or loose laid. Remove existing and / or too soft floorcoverings like carpet, needle felt, cushion vinyl.

7

Cement joints between tiles or other gaps of more than 2mm in depth and 5mm in width should be levelled. For Quick-Step hybrid vinyl click floors: any unevenness of more than 1mm over a length of 20cm must be levelled out. The same applies to unevenness of more than 4mm over a length of 2m. Bumps should be removed by sanding or scraping. If an appropriate levelling compound is required, check if a primer or sealer is needed. In most cases, the use of an underlay may help for levelling of the subfloor.

8

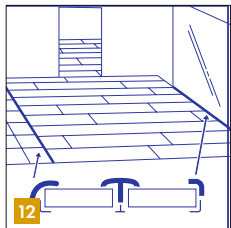
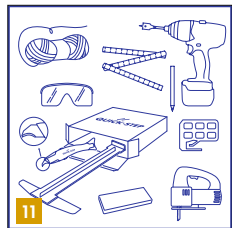
In case of installation on a wooden subfloor, please remove any existing floor covering first. No signs of mold and/or insect infestations should be present. Any wood sub-floor must be fully dry, with adequate crawl space ventilation. If not the fitting of an impervious floorcovering over the top, may lead to lifting or rotting of the sub-floor timber over time. Make sure the subfloor is level and nail or screw down any loose parts. Apply a suitable wooden floor sheet underlay, or use levelling compound on top for a perfect subfloor preparation. The sheet underlay must be fixed with an appropriate glue or every 30cm with screws. An eventual crawl space under the plank floor must be sufficiently ventilated. Remove any obstacles and make sure there is sufficient ventilation (minimum 4 cm<sup>2</sup> total ventilation openings per m<sup>2</sup> of floor) The moisture content of the wood must not exceed 14%.

9

The moisture content of the subfloor must be less than 75%RH (cement screed). In the case of floor heating, results must be respectively 60%RH. Always measure, record and keep your moisture content results. A new cement screed floor must dry at least 1 week per 1 cm thickness up to 4cm. Thicknesses over 4cm require twice as much drying time. For example, a 6cm concrete subfloor must dry at least 8 weeks.

10

Floor heating systems (water / electricity) which are built-in the screed can be used with Quick-Step hybrid vinyl floors if a constant room & floor temperature of minimum 18°C (can be guaranteed during acclimatization, installation and 48h after installation). For health and safety reasons and to avoid distortions with the Quick-Step hybrid vinyl floor, a floor surface temperature of maximum 27°C is allowed. A Quick-Step hybrid vinyl floor cannot be installed on top of so called loose layed heating systems like electrical foils, etc. Ask your Quick-Step dealer for any further details.

**11**

The following standard tools are needed: hammer, saw with blades for plastic (a jig-saw, hand circular saw, hand saw, or cross-cut saw), dust mask (during sawing), measurer, safety glasses, string line, gloves and a pencil. Besides that, you also need the following accessories: Quick-Step INSTALLATION SET (a pull-bar, spacers and a tapping block suitable for the Uniclic® click system) and suitable maintenance products.

Because Pulse Hybrid is manufactured with its own integrated underlay, no separate underlay is required. However damp affected or heated sub-floors should be covered with a plastic PE damp proof of >150um. Joints should be overlapped by 30cm and tapped.

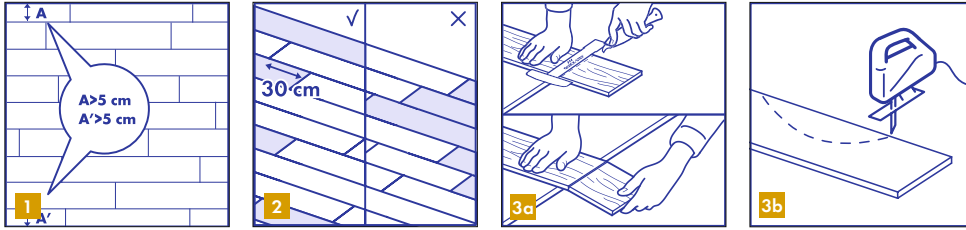
The use of accessories other than Quick-Step vinyl accessories may cause damage to your Quick-Step hybrid vinyl floor. In such cases the guarantee provided by Quick-Step will be void. For this reason we advise to use only Quick-Step hybrid vinyl accessories, which have been specially designed and tested for use with your Quick-Step hybrid vinyl floor.

**12**

Most open plan areas can be installed without need for control joints, however it is a good idea to install control joints at doorways to allow the entire panel to expand or contract freely. This is called "compartmentalisation". A perimeter gap of 8 mm is recommended, this will be covered with skirting, scotia or other special profiles available from your retailer. Be aware that if the flooring is installed at a higher temperature, it is likely to contract during cold periods, as such a cover of 5-8 mm will be required. Similarly, when installed at low temperature, the floor is likely to expand during hot periods, as such a full gap of 10 mm will be required. In general, continuous runs of flooring should not exceed 15 lm in a residential home. However, continuous runs may well exceed this in areas subject to continuous temperature control eg office space.

**13**

Check all panels before and during installation in optimal daylight conditions under the angle of light reflection. Defective panels must never be used. An installed plank is considered as accepted and cannot be claimed.



2. INSTALLATION

1

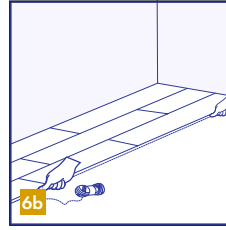
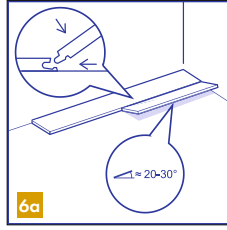
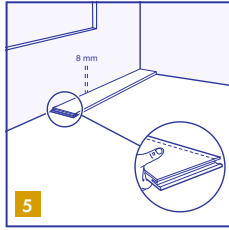
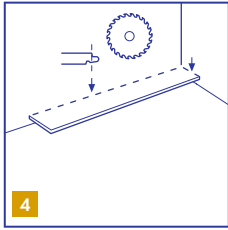
Before starting, carefully measure the length and the width of the room to plan a precise layout to achieve a balanced appearance of the floor. This is very important when installing typical tile decors. This will also ensure that you won't end up with the last row being too narrow. If the last row will be less than 5cm, the installation will be easier and better if you reduce the width of the planks of the first row.

2

During installation, make sure that you mix the floor panels (and floor boxes) sufficiently so that there are not too many identical, lighter or darker planks next to each other. To obtain the best visual effect, it is best to install the panels in the direction of the longest wall and/or parallel to the incidence of light. Ensure that the end joints of the panels in 2 successive rows are never in line, they should be staggered by at least 30cm. For a natural look and better mechanical strength, we do not recommend an installation of the planks in a pattern but rather at random formation.

3

To shorten the length of the plank with a straight cut, you can cut the Quick-Step hybrid vinyl floors with the decor side face up, using a special concave vinyl cutting knife. In order to cut the vinyl plank, draw a straight line along which you will be cutting, and use the knife to make a firm cut in the surface. You never need to completely cut through the vinyl. Then break off the plank using both hands. For any other cuts, you need to saw the planks. Depending on the type of saw, position your plank with the decor side face-up or face-down. Before making the actual cut, use a leftover piece to determine how the cleanest cut can be obtained (decor side face-up or face-down).



4

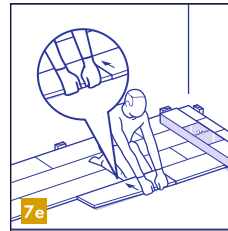
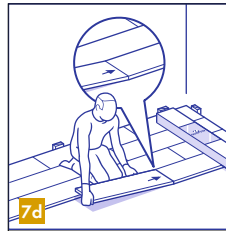
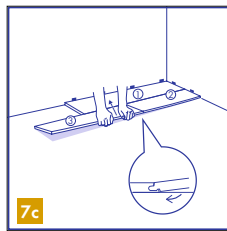
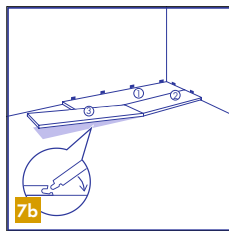
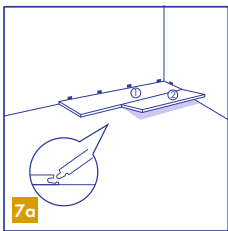
With Quick-Step hybrid vinyl click panels you can choose where you want to start in the room. Think about what will be the easiest way to install the floor. We will demonstrate the installation of Quick-Step hybrid vinyl floor for right-handed people, from right to left (from front viewpoint). Because of the Uniclic system, you can work in either direction.

5

Start with the first plank that will be installed in the corner. Remove the click profile on both the long and the short side of the plank by sawing. For other planks of the first row (not in the corner), remove the click profile on the long side that will be directly next to the wall. Any side of a plank that is directly next to a wall, must have its click profile removed, in order to ensure the required expansion gap.

6

In order to make the start of the installation easier, assemble the first 3 rows away from the wall, so you can sit on the planks during the assembly. Then slide the first 3 rows at the wanted position close to the wall with distance spacers in place. Take a string line and hold it alongside the installed planks to check and adjust the straightness of your installed first 3 rows. It is recommended to make additional checks of the straightness, in order to confirm the straightness during the installation. Remember to use the distance spacers for the expansion gap of 8mm along the perimeter.



7

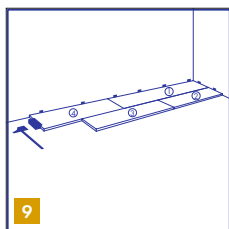
Uniclic® can be installed in two different ways. The preferred method is method A (angle-angle): First, rotate the short side of the plank to be installed, into the short side of the already installed plank, by means of the angle principle. Then raise the newly installed plank to an angle of 20-30°. This will also raise the previously installed planks in the same row, because their short sides are already connected. Now place your BOTH hands close to the joint as shown in the figure and pull the long side of the plank towards you. The panels will now click together. You can either insert the tongue into the groove, or the groove on to the tongue. The tongue in groove method is the most common and easiest way.

## 1. PREPARATION

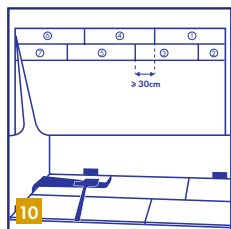
## 2. INSTALLATION

## 3. FINISHING

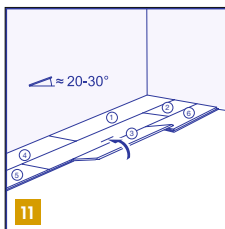
## 4. MAINTENANCE



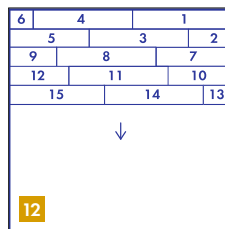
9



10



11



12

9

If method A is not possible (at hard to reach places by example), you can use method B (taping): With Uniclic® you can also join the panels, by tapping the planks into each other, eliminating the need to lift them. This method requires the use of the special Uniclic® tapping block. The planks should not be joined with a single tap. To avoid damaging the panels you must tap them together gradually. You can angle the short or long side of the plank first and then tap to connect the other side.

10

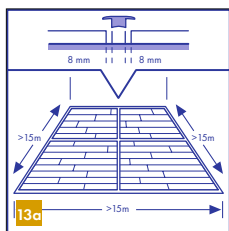
In places where it is too difficult to install the Uniclic® planks with the tapping block (e.g. against the wall), you can pull them together using the pull-bar and a hammer.

11

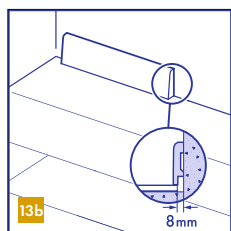
After the installation of each plank and before continuing with the next plank, check each short and long side joint to make sure there are no height differences and no openings.

12

Continue the installation like this - row by row - towards the end of the room. The easiest way to work is to sit on the already installed planks.



13a



13b

13

Room temperature varies continuously, so it is vital that the floor is able to expand and contract. For this reason, make sure you leave an expansion gap of 8 mm on all sides of the floor, around pipes, thresholds and under door frames. Expansion gaps can be finished by means of a skirting that is attached to the walls or with an expansion profile.

In most cases you don't need an expansion profile between different rooms. However, the use of an expansion profile is mandatory when:

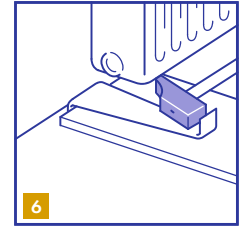
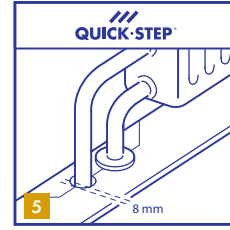
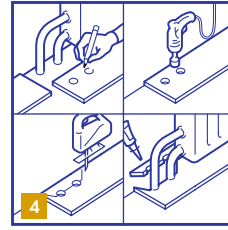
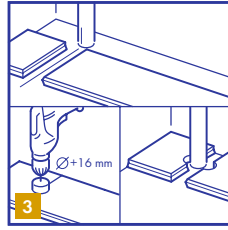
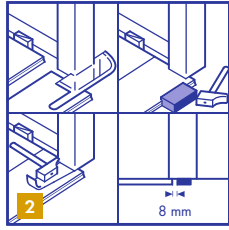
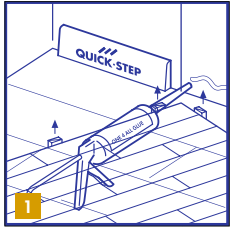
- the temperature in adjacent rooms will vary differently above and below the T-range of 18-30°.
- when you have rooms with and without floorheating/cool
- the maximum room size is exceeded:

\* For standard residential use (15-35°C), the maximum room size is 15mx15m.

\* For rooms with more extreme temperatures (5-65°C), the maximum room size is 8mx8m.

\* Commercial spaces with continual climate control (eg offices and retail stores) can have continuous flooring up to 30m

Larger rooms require additional expansion gaps and expansion profiles.



### 3. FINISHING

1

The matching Quick-Step incizo profile is available for finishing at different types of terminations. It can be for a ramp for floors of different heights, a connector for floors of equal height, a border for butting up to carpet, thresholds or other vertical finishes. It can also form small edge profiles for use in a range of application.

Install the skirting-board or scotia against the wall. Never attach the skirting-board to the floor. This method allows the floor to expand and contract under the skirting-board. Do not fill or cover the expansion joints with silicone or other kit. If you would like to finish your floor fully waterproof, read the instructions below "3. FINISHING IN ROOMS LIKE BATHROOMS, KITCHENS, LAUNDRY ROOMS AND ENTRANCE AREAS" before installing the skirtings.

2

When the new floor meets a threshold or a doorway, we recommend undercutting the door frames or moldings. To secure the correct cut, turn a plank upside down with the underlay below, and place it on the floor up to the door frame. This ensures that the cut will be made at the correct height. Then place a multi tool or hand saw flat against the plank and simply cut through the frame. Remove the cut out piece and vacuum away any debris.

Install the plank on the long side, keeping the short side close to the undercut molding. Then slide the plank underneath the undercut towards the already installed plank in order to close the short end joint. Use the Quick-Step pull bar and/or tapping block to secure absolute tightness in the long and short joint.

When sawing the panels make sure that the expansion gap under the door is 8mm. If you cannot lift the panel (e.g. under radiators), use the tapping block or pull-bar to tap the planks together.

3

In rows where there is a pipe, make sure the pipe falls exactly in line with the short side of two planks. Take a drill bit with the same diameter as the pipe plus 16mm.

Click the planks together on the short side and add a third plank on the long side for stability. Drill a hole centered on the joint between the two planks. Now you can install the planks.

4

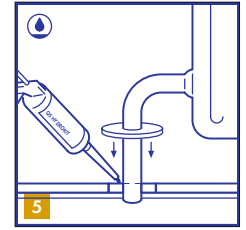
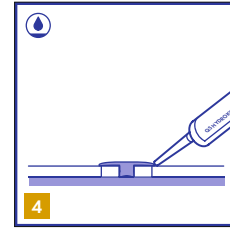
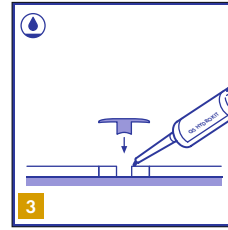
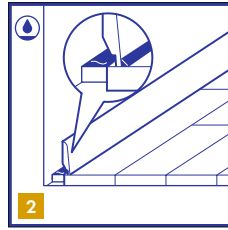
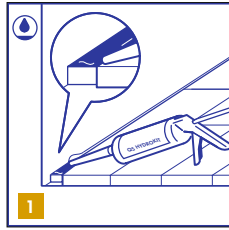
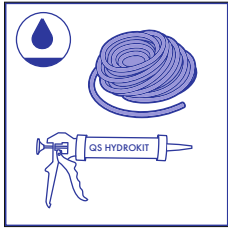
In rows where there is a double pipe, proceed as follows: 1. Measure where the pipe will come through the plank. Don't forget to allow room for the expansion joint. Measure the diameter of the pipe plus 16 mm for the expansion. 2. Drill through the panel where the pipe will come through 3. Extend the hole to the edge of the panel 4. Lay the panel around the pipe

5

For a perfect finish around pipes, use Quick • Step® pipe covers (floating placement).

6

In places where it is difficult to install the planks with the tapping block (e.g. underneath radiators), you can tap them together with the pulling iron and a hammer.



### 3. FINISHING IN ROOMS LIKE BATHROOMS, KITCHENS, LAUNDRY ROOMS AND ENTRANCE AREAS

This installation instruction can prevent water infiltration around the perimeter and obstacles of your hybrid vinyl flooring. Following these instruction carefully makes the floor fit for use in bathrooms, kitchens, laundry rooms and entrance areas. The water-resistant panels are not suitable for use in damp spaces like pool areas, saunas and rooms with built-in drains like showers. These extra water protection instructions do not cope to national regulations of water protection in wet rooms.

For a water resistant finishing, use the elastic waterproof transparent paste (QS HydroKit) and the foamstrip (NEVRFOAMSTRIP15). For colourmatched skirtings and colourmatched scotia, use also the hydrostrip.

**1**

Sealing the perimeter expansion joints combines a compressible PE foam and the flexible and waterproof Quick-Step® HydroKit. Place the PE foam in the expansion joints with the help of the self-adhesive backing and apply the flexible Quick-Step® HydroKit under slight angle towards the Quick-Step® floor. Make sure that the HydroKit covers about 1 to 2 mm of the wall, the whole foamstrip and 1 to 2 mm of the floor.

**2**

Install the skirting-board with Quick-Step One4all glue against the wall. When choosing the colour matched skirting or scotia, use the respective hydrostrips to avoid ingress of water and to obtain the look of a cleanly kitted finish. The waterproof paintable skirting (NEVSKRPAINTA) can be used without a hydrostrip.

Tip: To make work more clean, remove any excess HydroKit immediately.

**3**

Fix the Incizo base profile to the subfloor with construction adhesive. Apply the flexible HydroKit on the PE foam that is in the expansion joint.

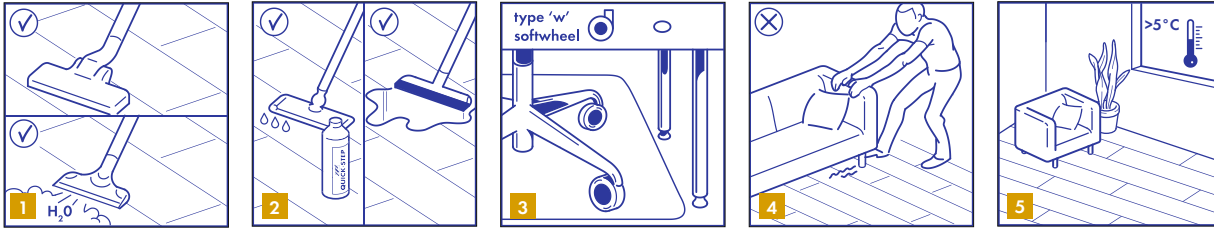
**4**

Push the Incizo profile in the base profile and the wet HydroKit. Add HydroKit where the Incizo touches the floor for a perfect waterseal.

**5**

For a perfect finish around pipes, use Quick-Step® pipe covers and the elastic waterproof transparent Quick-Step® HydroKit, taking into account the expansion of 8mm. Place the foamstrip in the expansion joints. Apply Hydrokit on the foamstrip. Then place the pipe covers in a floating installation.





#### 4. MAINTENANCE

1

You can immediately walk on your new Quick-Step hybrid vinyl floor after installation. It is allowed to use a vacuum cleaner with soft edges and soft wheels on your vinyl floor.

2

Your Quick-Step hybrid vinyl floor can be cleaned with a damp or wet mop. Quick-Step Clean is a maintenance product specifically developed to keep your new vinyl floor in top condition. Never use natural soap detergents since this will leave a sticky film on the surface which will collect dust and dirt and will be difficult to remove. The same with cleaning agents containing abrasive particles, these might matt down the surface. It is always important not to overdose any cleaning agent, as this will lead to a build up of cured cleaning agent which is difficult to remove without using a vinyl stripper.

For further information on how to clean and maintain your floor, please visit [www.Quick-Step.com](http://www.Quick-Step.com). For specific cleaning instructions in commercial applications or projects, you can contact the Quick-Step technical department.

Always remove spilled liquids from the floor immediately.

3

Protect furniture and chair legs. Only use office chairs with soft castors designed especially for hard flooring, as normal castors will damage your floor/or use a suitable desk mat.

4

Never drag heavy items or furniture over the floor, but lift them up. Make sure furniture legs have a large floor surface and are provided with non-staining floor protectors. The taller and/or wider the furniture feet are, the better the weight distribution on the floor will be, and the less chance there is to damage the floor. Place non-rubber backed mats at all outside entrances to prevent dirt, grit and soil from being transferred onto your floor. This will reduce damage, the maintenance requirement and extend the life of your floor. Please note that prolonged contact with some rubber types can cause a permanent stain.

Do not allow cigarettes, matches or other very hot items to contact the floor as this may cause permanent damage.

5

Ensure that the indoor climate conditions are always kept  $> 5^{\circ}\text{C}$  ( $41^{\circ}\text{F}$ ) and preferably between  $18 - 30^{\circ}\text{C}$  ( $64 - 86^{\circ}\text{F}$ ). It is also important to keep the subfloor in the temperature range mentioned above.